

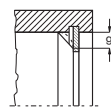
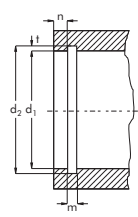
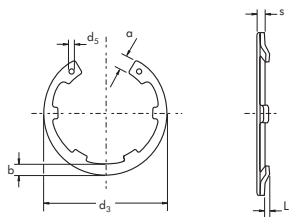


d ₁	984L JL														D A T A					
		s	Δ	d ₃	Δ	a max.	b ≈	d ₅ min.	$\frac{\Delta}{(kg/1000)}$	d ₂	Δ	m min.	t	n	FN (kN)	FR (kN)	g	FRg (kN)	L min.	C (kN/mm)
16	JL16	0.60	+0.00 -0.05	17.3	+0.42 -0.13	3.4	2.1	1.7	0.72	16.8	+0.11/-0.00	0.70	0.40	1.2	3.40	1.75	1.0	0.56	0.25	0.47
17	JL17	0.60		18.3		3.7	2.2	1.7	0.80	17.8		0.70	0.40	1.2	3.60	1.71	1.0	0.54	0.25	0.38
18	JL18	0.80		19.5		4.1	2.3	1.7	0.90	19.0		0.90	0.50	1.5	4.80	4.20	1.0	1.33	0.25	0.72
19	JL19	0.80		20.5		3.8	2.3	2.0	0.99	20.0		0.90	0.50	1.5	5.10	4.06	1.0	1.29	0.25	0.86
20	JL20	1.00		21.5		3.9	2.4	2.0	1.06	21.0		1.10	0.50	1.5	5.40	7.80	1.0	2.50	0.25	1.55
21	JL21	1.00	+0.00 -0.06	22.5	+0.42 -0.21	4.0	2.4	2.0	1.17	22.0	+0.15 -0.00	1.10	0.50	1.5	5.70	8.10	1.0	2.60	0.25	1.50
22	JL22	1.00		23.5		4.0	2.6	2.0	1.28	23.0		1.10	0.50	1.5	5.90	8.35	1.0	2.70	0.35	1.52
23	JL23	1.20		24.6		4.1	2.6	2.0	1.48	24.1		1.30	0.55	1.6	6.80	13.80	1.0	4.50	0.35	2.42
24	JL24	1.20		25.9		4.2	2.6	2.0	1.60	25.2		1.30	0.60	1.8	7.70	13.90	1.0	4.60	0.35	2.26
25	JL25	1.20		26.9		4.4	2.8	2.0	1.72	26.2		1.30	0.60	1.8	8.00	14.60	1.0	4.70	0.35	2.12
26	JL26	1.20	+0.00 -0.06	28.5	+0.50 -0.25	4.4	2.8	2.0	2.00	27.2	+0.21 -0.00	1.30	0.60	1.8	8.40	13.80	1.0	4.60	0.35	2.04
27	JL27	1.20		29.1		4.5	2.9	2.0	2.00	28.4		1.30	0.70	2.1	10.10	13.30	1.0	4.50	0.35	1.94
28	JL28	1.20		30.1		4.9	3.0	2.0	2.10	29.4		1.30	0.70	2.1	10.50	13.30	1.0	4.50	0.35	1.57
30	JL30	1.20		32.1		4.9	3.2	2.0	2.35	31.4		1.30	0.70	2.1	11.30	13.70	1.0	4.60	0.35	1.58
32	JL32	1.20		34.4		5.1	3.3	2.5	2.50	33.7		1.30	0.85	2.5	14.60	13.80	1.0	4.60	0.35	1.55
34	JL34	1.50	36.5	5.3	3.4	2.5	3.80	35.7	1.60	0.85	2.5	15.40	26.20	1.5	6.30	0.45	2.65			
35	JL35	1.50	37.8	5.5	3.6	2.5	4.00	37.0	1.60	1.00	3.0	18.80	26.90	1.5	6.40	0.45	2.61			
36	JL36	1.50	38.8	5.6	3.6	2.5	4.15	38.0	1.60	1.00	3.0	19.40	26.40	1.5	6.40	0.45	2.48			
38	JL38	1.50	+0.00 -0.07	40.8	+0.90 -0.39	6.1	3.8	2.5	4.40	40.0	+0.25 -0.00	1.60	1.00	3.0	22.50	28.20	1.5	6.70	0.45	2.07
40	JL40	1.75		43.5		7.2	4.0	2.5	5.30	42.5		1.85	1.25	3.8	27.00	44.60	2.0	8.30	0.55	2.42
42	JL42	1.75		45.5		7.2	4.1	2.5	6.00	44.5		1.85	1.25	3.8	28.40	44.70	2.0	8.40	0.55	2.44
45	JL45	1.75		48.5		7.2	4.3	2.5	6.60	47.5		1.85	1.25	3.8	30.20	43.10	2.0	8.20	0.55	2.36
47	JL47	1.75		50.5		7.2	4.5	2.5	6.90	49.5		1.85	1.25	3.8	31.40	43.50	2.0	8.30	0.55	2.39
50	JL50	2.00	54.2	8.2	4.7	2.5	8.50	53.0	2.15	1.50	4.5	40.40	60.80	2.0	12.10	0.65	2.64			
52	JL52	2.00	56.2	8.2	4.7	2.5	9.40	55.0	2.15	1.50	4.5	42.00	60.20	2.0	12.00	0.65	2.57			
55	JL55	2.00	59.2	8.2	5.1	2.5	9.75	58.0	2.15	1.50	4.5	44.40	60.30	2.0	12.50	0.65	2.64			
57	JL57	2.00	+0.00 -0.07	61.2	+1.10 -0.46	8.2	5.2	2.5	11.65	60.0	+0.30 -0.00	2.15	1.50	4.5	46.00	60.80	2.0	12.70	0.65	2.67
60	JL60	2.00		64.2		8.2	5.5	2.5	12.70	63.0		2.15	1.50	4.5	48.30	61.00	2.0	13.00	0.65	2.68
62	JL62	2.00		66.2		8.2	5.6	2.5	12.75	65.0		2.15	1.50	4.5	49.80	60.90	2.0	13.00	0.65	2.67
65	JL65	2.50		69.2		10.2	5.8	3.0	16.70	68.0		2.65	1.50	4.5	51.80	121.00	2.5	20.80	0.90	3.62
70	JL70	2.50		74.5		10.2	6.2	3.0	20.20	73.0		2.65	1.50	4.5	56.20	119.00	2.5	21.00	0.90	3.02
72	JL72	2.50	76.5	10.2	6.4	3.0	21.20	75.0	2.65	1.50	4.5	58.00	119.20	2.5	21.00	0.90	3.01			
75	JL75	2.50	79.5	10.2	6.6	3.0	22.60	78.0	2.65	1.50	4.5	60.00	118.00	2.5	21.00	0.90	2.99			
80	JL80	2.50	+0.00 -0.08	85.5	+1.30 -0.54	10.2	7.0	3.0	25.00	83.5	+0.35 -0.00	2.65	1.75	5.3	74.60	120.90	2.5	21.80	0.90	3.24
90	JL90	3.00		95.5		12.2	7.7	3.5	35.50	93.5		3.15	1.75	5.3	84.00	199.00	3.0	31.40	0.90	3.47
100	JL100	3.00		105.5		12.2	8.5	3.5	43.50	103.5		3.15	1.75	5.3	93.10	188.00	3.0	30.80	0.90	3.42

 Part Number Référence Teile Nummer Referencia de pieza	 Tolerance Tolérance Toleranz Tolerancia	 Weight Masse Gewicht Peso	 Ring Anneau/Circlips Ring Anillo	 Groove Gorge Nut Ranura
------------------------------------------------------------------------------------------------------------------------------------------------------	---------------------------------------------------------------------------------------------------------------------------------------	---------------------------------------------------------------------------------------------------------------------------	----------------------------------------------------------------------------------------------------------------------------------	-------------------------------------------------------------------------------------------------------------------------



984L/JL

